



**HYDAC Technology Corporation**

2260 City Line Road,

Bethlehem, PA 18017

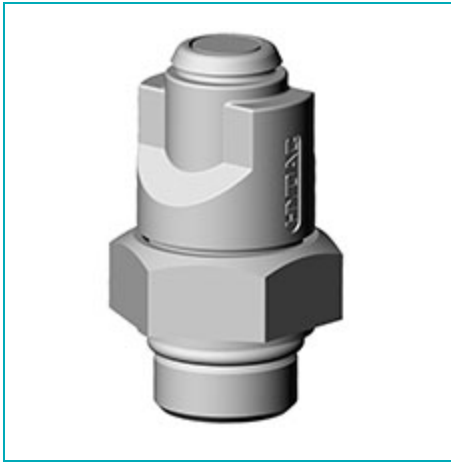
TOLL FREE: [877-GO-HYDAC](tel:877-GO-HYDAC) (464-9322)

Website: [www.hydac-na.com](http://www.hydac-na.com)

# VMF-VR: Low Pressure / Return Type BM: Visual Manual Reset

Early warning pressure devices protect the hydraulic circuit from contamination, alerting the operator that the filter element is near capacity and must be changed. The clogging indicator is typically set to trip at 1-bar (14 psid) below the filter bypass setting, to allow the operator sufficient time for element change-out. Available in visual, combo electrical/visual, as well as an extensive list of other options and certifications. A comprehensive offering of clogging indicators ensures that

[+ more](#)



1

Part Number	Model Code Description	Type of Indication	Trip Pressure / Range	Thread	Medium	Maximum Torque
<a href="#">1287943</a>	VMF 5 BM.1 /-V	Return Line Static Indicator	5 bar 72 psi	G 1/8	Mineral Oil or Water Based Fluids	11 lb·ft 15 N·m
<a href="#">1281969</a>	VMF2BM.1	Return Line Static Indicator	2 bar 29 psi	G 1/8	Mineral Oil or Water Based Fluids	11 lb·ft 15 N·m

Part Number	Model Code Description	Type of Indication	Trip Pressure / Range	Thread	Medium	Maximum Torque
<a href="#"><u>1293230</u></a>	VMF2BM.1/-V	Return Line Static Indicator	2 bar 29 psi	G 1/8	Mineral Oil or Water Based Fluids	11 lb·ft 15 N·m
<a href="#"><u>1322335</u></a>	VMF5BM.1	Return Line Static Indicator	5 bar 72 psi	G 1/8	Mineral Oil or Water Based Fluids	11 lb·ft 15 N·m
<a href="#"><u>1264238</u></a>	VR2BM.1	Return Line Static Indicator	2 bar 29 psi	G 1/2	Mineral Oil or Water Based Fluids	N/A
<a href="#"><u>1273734</u></a>	VR2BM.1/-V	Return Line Static Indicator	2 bar 29 psi	G 1/2	Mineral Oil or Water Based Fluids	N/A
<a href="#"><u>1291166</u></a>	VR5BM.1	Return Line Static Indicator	5 bar 72 psi	G 1/2	Mineral Oil or Water Based Fluids	N/A
<a href="#"><u>1304061</u></a>	VR5BM.1/-V	Return Line Static Indicator	5 bar 72 psi	G 1/2	Mineral Oil or Water Based Fluids	N/A